

45° JUNCTION

FITTING SIZE (MM)	NOMINAL BORE	CODE
50 x 50	40 x 40	HD-3200-5050
56 x 50	50 x 40	HD-3200-5650
56 x 56	50 x 50	HD-3200-5656
63 x 50	57 x 40	HD-3200-6350
63 x 56	57 x 50	HD-3200-6356
63 x 63	57 x 57	HD-3200-6363
75 x 50	65 x 40	HD-3200-7550
75 x 56	65 x 50	HD-3200-7556
75 x 63	65 x 57	HD-3200-7563
75 x 75	65 x 65	HD-3200-7575
90 x 50	80 x 40	HD-3200-9050
90 x 56	80 x 50	HD-3200-9056
90 x 63	80 x 57	HD-3200-9063
90 x 75	80 x 65	HD-3200-9075
90 x 90	80 x 80	HD-3200-9090
110 x 50	100 x 40	HD-3200-1150
110 x 56	100 x 50	HD-3200-1156
110 x 63	100 x 57	HD-3200-1163
110 x 75	100 x 65	HD-3200-1175
110 x 90	100 x 80	HD-3200-1190
110 x 110	100 x 100	HD-3200-1111
125 x 110	115 x 100	HD-3200-1211
125 x 125	115 x 115	HD-3200-1212
160 x 110	150 x 100	HD-3200-1611
160 x 125	150 x 115	HD-3200-1612
160 x 160	150 x 150	HD-3200-1616



45° FABRICATED JUNCTION

FITTING SIZE (MM)	NOMINAL BORE	CODE
200 x 110	185 x 100	HD-6200-2011
200 x 125	185 x 115	HD-6200-2012
200 x 160	185 x 150	HD-6200-2016
200 x 200	185 x 185	HD-6200-2020
250 x 110	225 x 100	HD-6200-2511
250 x 125	225 x 115	HD-6200-2512
250 x 160	225 x 150	HD-6200-2516
250 x 200	225 x 185	HD-6200-2520
250 x 250	225 x 225	HD-6200-2525
315 x 110	300 x 100	HD-6200-3111
315 x 125	300 x 115	HD-6200-3112
315 x 160	300 x 150	HD-6200-3116
315 x 200	300 x 185	HD-6200-3120
315 x 250	300 x 225	HD-6200-3125
315 x 315	300 x 300	HD-6200-3131



45° DOUBLE JUNCTION

FITTING SIZE (MM)	NOMINAL BORE	CODE
110	100 x 100	HD-3220-1111



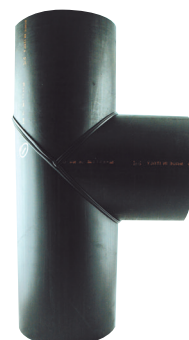
88.5° JUNCTION

FITTING SIZE (MM)	NOMINAL BORE	CODE
50 x 50	40 x 40	HD-3150-5050
56 x 50	50 x 40	HD-3150-5650
56 x 56	50 x 50	HD-3150-5656
63 x 50	57 x 40	HD-3150-6350
63 x 56	57 x 50	HD-3150-6356
63 x 63	57 x 57	HD-3150-6363
75 x 50	65 x 40	HD-3150-7550
75 x 56	65 x 50	HD-3150-7556
75 x 63	65 x 57	HD-3150-7563
75 x 75	65 x 65	HD-3150-7575
90 x 50	80 x 40	HD-3150-9050
90 x 56	80 x 50	HD-3150-9056
90 x 63	80 x 57	HD-3150-9063
90 x 75	80 x 65	HD-3150-9075
90 x 90	80 x 80	HD-3150-9090
110 x 50	100 x 40	HD-3150-1150
110 x 56	100 x 50	HD-3150-1156
110 x 63	100 x 57	HD-3150-1163
110 x 75	100 x 65	HD-3150-1175
110 x 90	100 x 80	HD-3150-1190
110 x 110	100 x 100	HD-3150-1111
160 x 110	150 x 100	HD-3150-1611
160 x 160	150 x 150	HD-3150-1616



88.5° FABRICATED JUNCTION

FITTING SIZE (MM)	NOMINAL BORE	CODE
200 x 110	185 x 100	HD-6160-2011
200 x 125	185 x 115	HD-6160-2012
200 x 160	185 x 150	HD-6160-2016
200 x 200	185 x 185	HD-6160-2020
250 x 110	225 x 100	HD-6160-2511
250 x 125	225 x 115	HD-6160-2512
250 x 160	225 x 150	HD-6160-2516
250 x 200	225 x 185	HD-6160-2520
250 x 250	225 x 225	HD-6160-2525
315 x 110	300 x 100	HD-6160-3111
315 x 125	300 x 115	HD-6160-3112
315 x 160	300 x 150	HD-6160-3116
315 x 200	300 x 185	HD-6160-3120
315 x 250	300 x 225	HD-6160-3125
315 x 315	300 x 300	HD-6160-3131



88.5° SWEEP JUNCTION

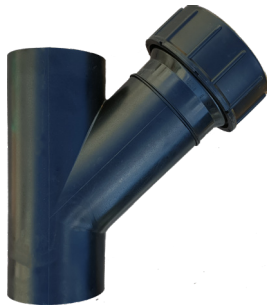
FITTING SIZE (MM)	NOMINAL BORE	CODE
110 x 110	100 x 100	HD-3170-1111



VERTICAL INSPECTION ACCESS PIPE

FITTING SIZE (MM)	NOMINAL BORE	CODE
110 Vert. *	100	HD-3970-110V
110 Vert w plug	100	HD-3970-110VP

* Pictured below



HORIZONTAL INSPECTION ACCESS PIPE

FITTING SIZE (MM)	NOMINAL BORE	CODE
50	40	HD-3970-0050
56	50	HD-3970-0056
63	57	HD-3970-0063
75	65	HD-3970-0075
90	80	HD-3970-0090
110 Horz. *	100	HD-3970-110H
160 x 110	150 x 100	HD-3970-1611
160 x 160	150 x 150	HD-3970-1616

* Pictured below



EXPANSION SOCKET

FITTING SIZE (MM)	NOMINAL BORE	CODE
50	40	HD-7070-0050
56	50	HD-7070-0056
63	57	HD-7070-0063
75	65	HD-7070-0075
90	80	HD-7070-0090
110	100	HD-7070-0110
160	150	HD-7070-0160
200	185	HD-7070-0200
250	225	HD-7070-0250
315	300	HD-7070-0315



RING SEAL SOCKET

SIZE (MM)	NOMINAL BORE	CODE FOR EF WELD	CODE SHORT LEG
50	40	HD-7080-0050	HD-7080-0050-SHT
56	50	HD-7080-0056	HD-7080-0056-SHT
63	57	HD-7080-0063	HD-7080-0063-SHT
75	65	HD-7080-0075	HD-7080-0075-SHT
90	80	HD-7080-0090	HD-7080-0090-SHT
110	100	HD-7080-0110	HD-7080-0110-SHT
160	150	HD-7080-0160	HD-7080-0160-SHT
200	185	HD-7080-0200	HD-7080-0200-SHT
250	225	HD-7080-0250	HD-7080-0250-SHT
315	300	HD-7080-0315	HD-7080-0315-SHT

