

**SLIM FLANGE - SDR11**

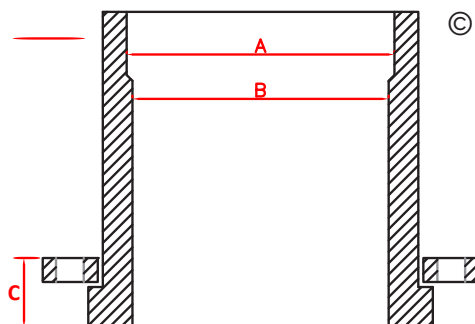
**SDR11 (PN12.5) WITH AS4087 B7 CLASS 16 TABLE D BACKING RING**

CODE (NYLON FLANGE)	CODE (STAINLESS FLANGE)	PE END SIZE	FLANGE SIZE	PRESSURE RATING	PIPE END SDR	PIPE ID FLANGE END (B)	FLANGE PCD	BOLT HOLES NO. X DIA	FLANGE COMBINED THICKNESS (C)
3444-2521	3464-2521	250mm	200mm (8")	PN12.5	SDR11/13.6	203mm	292mm	8x18	54
3444-3125	3464-3125	315mm	250mm (10")	PN12.5	SDR11/13.6	256mm	356mm	8x22	59
3444-3530	3464-3530	355mm	300mm (12")	PN12.5	SDR11/13.6	289mm	406mm	12x22	63
3444-4030	3464-4030	400mm	300mm (12")	PN12.5	SDR11/13.6	289mm	406mm	12x22	63
3444-4035	3464-4035	400mm	350mm (14")	PN12.5	SDR11/13.6	325mm	470mm	12x26	75
3444-4037	3464-4037	400mm	375mm (15")	PN12.5	SDR11/13.6	325mm	495mm	12x26	75
3444-4537	3464-4537	450mm	375mm (15")	PN12.5	SDR11/13.6	366mm	495mm	12x26	90
3444-4540	3464-4540	450mm	400mm (16")	PN12.5	SDR11/13.6	366mm	521mm	12x26	90
3444-5045	3464-5045	500mm	450mm (18")	PN12.5	SDR11/13.6	406mm	584mm	12x26	90
3444-5650	3464-5650	560mm	500mm (20")	PN12.5	SDR11/13.6	455mm	641mm	16x26	98

**SDR11 (PN16) WITH AS4087 B7 CLASS 16 TABLE D BACKING RING**

CODE (NYLON FLANGE)	CODE (STAINLESS FLANGE)	PE END SIZE	FLANGE SIZE	PRESSURE RATING	PIPE END SDR	PIPE ID FLANGE END (B)	FLANGE PCD	BOLT HOLES NO. X DIA	FLANGE COMBINED THICKNESS (C)
3443-2521	3463-2521	250mm	200mm (8")	PN16	SDR11	183mm	292mm	8x18	51
3443-3125	3463-3125	315mm	250mm (10")	PN16	SDR11	228mm	356mm	8x22	57
3443-3530	3463-3530	355mm	300mm (12")	PN16	SDR11	256mm	406mm	12x22	63
3443-4030	3463-4030	400mm	300mm (12")	PN16	SDR11	256mm	406mm	12x22	63
3443-4035	3463-4035	400mm	350mm (14")	PN16	SDR11	289mm	470mm	12x26	70
3443-4037	3463-4037	400mm	375mm (15")	PN16	SDR11	325mm	495mm	12x26	75
3443-4537	3463-4537	450mm	375mm (15")	PN16	SDR11	325mm	495mm	12x26	75
3443-4540	3463-4540	450mm	400mm (16")	PN16	SDR11	325mm	521mm	12x26	75
3443-5045	3463-5045	500mm	450mm (18")	PN16	SDR11	366mm	584mm	12x26	90
3443-5650	3463-5650	560mm	500mm (20")	PN16	SDR11	407mm	641mm	16x26	98

Note: All options are available with galvanised backing ring option. PN16, ANSI and other flange patterns are available on request.

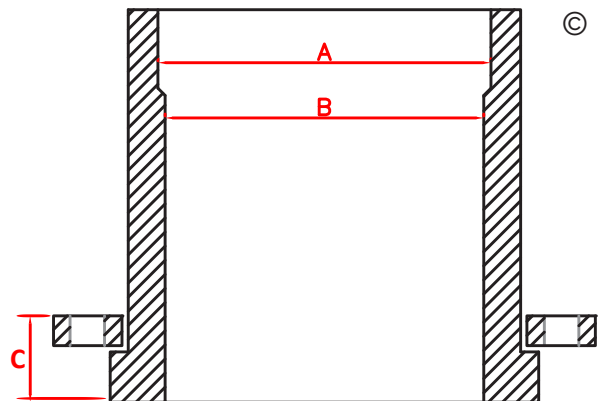


**SLIM FLANGE - SDR11**

**SDR11 (PN12.5 / PN16) WITH AS2129 TABLE E BACKING RING**

CODE (NYLON FLANGE)	CODE (STAINLESS FLANGE)	PE END SIZE	FLANGE SIZE	PRESSURE RATING	PIPE END SDR	PIPE ID FLANGE END (B)	FLANGE PCD	BOLT HOLES NO. X DIA	FLANGE COMBINED THICKNESS (C)
3454-9075	3474-9075	90mm	75mm (2 1/2")	PN16	SDR11	73mm	127mm	4x18	28
3454-1190	3474-1190	110mm	90mm (3")	PN16	SDR11	89mm	146mm	4x18	31
3454-1612	3474-1612	160mm	125mm (5")	PN16	SDR11	130mm	210mm	8x18	39
3454-2015	3474-2015	200mm	150mm (6")	PN16	SDR11	146mm	235mm	8x22	49
3454-2521	3474-2521	250mm	200mm (8")	PN12.5	SDR11/13.6	203mm	292mm	8x22	54
3454-3125	3474-3125	315mm	250mm (10")	PN12.5	SDR11/13.6	256mm	356mm	12x22	62
3454-3530	3474-3530	355mm	300mm (12")	PN12.5	SDR11/13.6	289mm	406mm	12x26	65
3454-4030	3474-4030	400mm	300mm (12")	PN12.5	SDR11/13.6	289mm	406mm	12x26	65
3454-4035	3474-4035	400mm	350mm (14")	PN12.5	SDR11/13.6	325mm	470mm	12x26	75
3454-4540	3474-4540	450mm	400mm (16")	PN12.5	SDR11/13.6	366mm	521mm	12x26	92
3454-5045	3474-5045	500mm	450mm (18")	PN12.5	SDR11/13.6	406mm	584mm	16x26	95
3454-5650	3474-5650	560mm	500mm (20")	PN12.5	SDR11/13.6	455mm	641mm	16x26	98
3454-6356	3474-6356	630mm	560mm (22")	PN12.5	SDR11/13.6	512mm	699mm	16x30	109
3453-6356	3493-6356	630mm	560mm (22")	PN16	SDR11	456mm	699mm	16x30	104

\* Where noted, SDR11/SDR13.6 slim flanges are supplied with the pipe end suited to SDR13.6 (A) and can be cut back to a pipe end of SDR11 (B) to allow choice when butt welding, as per the diagram. Electrofusion welds can be completed without the need for trimming.



**SLIM FLANGE - SDR17**

**SDR17 (PN10) WITH AS4087 B7 CLASS 16 TABLE D BACKING RING**

CODE (NYLON FLANGE)	CODE (STAINLESS FLANGE)	PE END SIZE	FLANGE SIZE	PRESSURE RATING	PIPE END SDR	PIPE ID FLANGE END (B)	FLANGE PCD	BOLT HOLES NO. X DIA	FLANGE COMBINED THICKNESS (C)
3446-2521	3466-2521	250mm	200mm (8")	PN10	SDR17	198mm	292mm	8x18	44
3446-3125	3466-3125	315mm	250mm (10")	PN10	SDR17	246mm	356mm	8x22	44
3446-3530	3466-3530	355mm	300mm (12")	PN10	SDR17	312mm	406mm	12x22	53
3446-4030	3466-4030	400mm	300mm (12")	PN10	SDR17	312mm	406mm	12x22	53
3446-4035	3466-4035	400mm	350mm (14")	PN10	SDR17	352mm	470mm	12x26	63
3446-4037	3466-4037	400mm	375mm (15")	PN10	SDR17	352mm	495mm	12x26	63
3446-4537	3466-4537	450mm	375mm (15")	PN10	SDR17	396mm	495mm	12x26	75
3446-4540	3466-4540	450mm	400mm (16")	PN10	SDR17	396mm	521mm	12x26	75
3446-5045	3466-5045	500mm	450mm (18")	PN10	SDR17	440mm	584mm	12x26	90
3446-5650	3466-5650	560mm	500mm (20")	PN10	SDR17	492mm	641mm	16x26	98

**SDR17 (PN10) WITH AS2129 TABLE E BACKING RING**

CODE (NYLON FLANGE)	CODE (STAINLESS FLANGE)	PE END SIZE	FLANGE SIZE	PRESSURE RATING	PIPE END SDR	PIPE ID FLANGE END (B)	FLANGE PCD	BOLT HOLES NO. X DIA	FLANGE COMBINED THICKNESS (C)
3456-9075	3476-9075	90mm	75mm (2 1/2")	PN10	SDR17	79mm	127mm	4x18	28
3456-1190	3476-1190	110mm	90mm (3")	PN10	SDR17	96mm	146mm	4x18	30
3456-1612	3476-1612	160mm	125mm (5")	PN10	SDR17	141mm	210mm	8x18	32
3456-2015	3476-2015	200mm	150mm (6")	PN10	SDR17	158mm	235mm	8x22	41
3456-2521	3476-2521	250mm	200mm (8")	PN10	SDR17	198mm	292mm	8x22	44
3456-3125	3476-3125	315mm	250mm (10")	PN10	SDR17	246mm	356mm	12x22	47
3456-3530	3476-3530	355mm	300mm (12")	PN10	SDR17	312mm	406mm	12x26	55
3456-4030	3476-4030	400mm	300mm (12")	PN10	SDR17	312mm	406mm	12x26	55
3456-4035	3476-4035	400mm	350mm (14")	PN10	SDR17	352mm	470mm	12x26	63
3456-4540	3476-4540	450mm	400mm (16")	PN10	SDR17	396mm	521mm	12x26	77
3456-5045	3476-5045	500mm	450mm (18")	PN10	SDR17	440mm	584mm	16x26	95
3456-5650	3476-5650	560mm	500mm (20")	PN10	SDR17	492mm	641mm	16x26	98
3456-6356	3476-6356	630mm	560mm (22")	PN10	SDR17	554mm	699mm	16x30	104

Note: All options are available with galvanised backing ring option. PN16, ANSI and other flange patterns are available on request.

