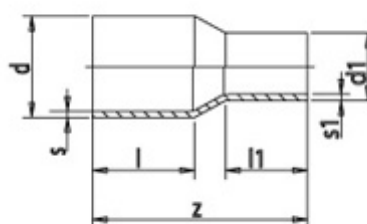


SPIGOT REDUCER

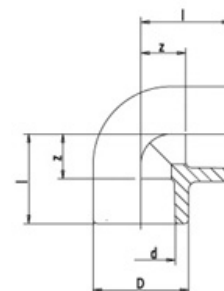
CODE	d	d1	s	s1	l	l1	z	SDR
DCT207-125110	125	110	14	12.3	100	85	225	9
DCT207-160110	160	110	14.6	10	110	93	255	11
DCT207-160125	160	125	14.6	11.4	113	95	260	11
DCT207-200160	200	160	18.2	14.6	142	117	303	11
DCT207-250160	250	160	22.7	14.6	138	111	339	11
DCT207-315250	315	250	28.6	22.7	160	145	400	11

Larger sizes available on request



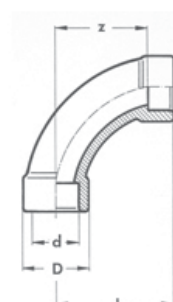
90° ELBOW

CODE	d	D	l	z
D210-0016	16	26	24	11
DCT210-0020	20	29	28	13
DCT210-0025	25	34	32	16
DCT210-0032	32	43	38	20
DCT210-0040	40	52	44	23
DCT210-0050	50	65	52	28
DCT210-0063	63	84	62	34
DCT210-0075	75	101	71	41
DCT210-0090	90	120	83	50
DCT210-0110	110	148	99	62
DCT210-0125	125	165	124	84



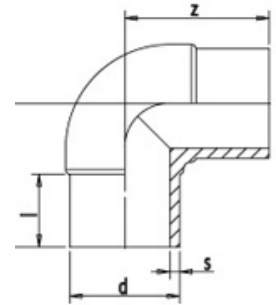
90° LONG RADIUS BEND

CODE	d	D	l	z
DCT211-0020	20	28	56	42
DCT211-0025	25	34	69	53
DCT211-0032	32	42	86	68
DCT211-0040	40	52	106	86



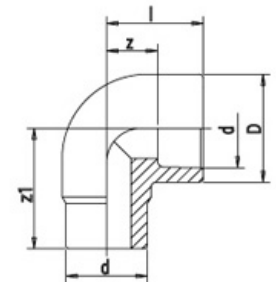
90° SPIGOT ELBOW

CODE	d	D	l	z
DCT212-0160	160	14.6	117	210
DCT212-0200	200	18.2	128	250
DCT212-0225	225	20.5	136	269
DCT212-0250	250	22.7	180	307
DCT212-0315	315	28.6	192	393
DCT212-0355	355	32.2	170	411
DCT212-0400	400	36.3	187	470
DCT212-0450	450	40.9	204	527
DCT212-0500	500	45.4	222	562



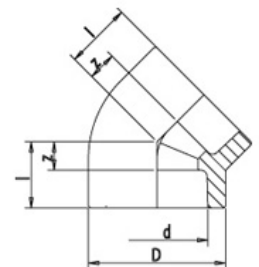
90° M/F ELBOW

CODE	d	D	l	z	z1
DCT214-0020	20	29	27	12	36
DCT214-0025	25	34	30	14	41
DCT214-0032	32	43	36	18	48



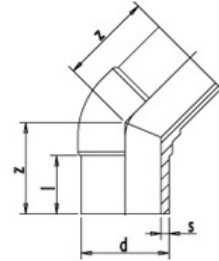
45° ELBOW

CODE	d	D	l	z
D230-0016	16	23	19	6
DCT230-0020	20	29	21	6
DCT230-0025	25	34	24	8
DCT230-0032	32	43	28	10
DCT230-0040	40	52	32	11
DCT230-0050	50	65	37	13
DCT230-0063	63	82	44	16
DCT230-0075	75	99	50	20
DCT230-0090	90	120	58	25
DCT230-0110	110	148	69	32
DCT230-0125	125	165	77	37



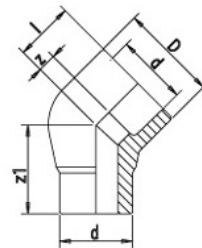
45° SPIGOT ELBOW

CODE	d	D	l	z
DCT231-0160	160	14.6	113	169
DCT231-0200	200	18.2	127	201
DCT231-0250	250	22.7	155	217
DCT231-0315	315	28.6	161	280
DCT231-0355	355	32.2	170	320
DCT231-0400	400	36.3	187	350
DCT231-0450	450	40.9	204	383
DCT231-0500	500	45.4	220	410



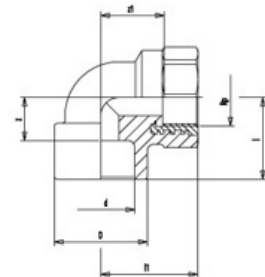
45° M/F ELBOW

CODE	d	D	l	z	z1
DCT233-0020	20	29	20	5	28
DCT233-0025	25	34	22	6	34
DCT233-0032	32	43	26	8	39



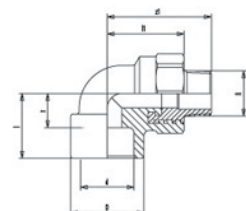
90° FEMALE THREAD ELBOW

CODE	d – Rp	D	l	l1	z	z1	SW
D220-1615	16–1/2	23	25	32	12	18	36
DCT220-2015	20–1/2	29	28	34	14	20	36
DCT220-2020	20–3/4	34	32	40	18	25	44
DCT220-2515	25–1/2	34	32	36	14	24	36
DCT220-2520	25–3/4	34	32	40	16	25	44
DCT220-3225	32–1	43	38	48	20	30	51



90° MALE THREAD ELBOW

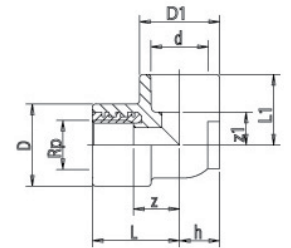
CODE	d – R	D	l	l1	z	z1	SW
DCT224-2015	20–1/2	29	28	34	14	49	36
DCT224-2515	25–1/2	34	32	36	16	53	36



90° FEMALE ELBOW WINGBACK / BACKPLATE

CODE	d - Rp	D	D1	L	L1	h	t*	z	z1
DCT225-1615	16-1/2	35	29	35	27	15	40	21	14
DCT225-2015	20-1/2	35	29	35	27	15	40	21	11
DCT225-2515	25-1/2	35	34	37	30	17	40	23	14
DCT225-2520	25-3/4	43	43	43	35	22	50	28	19
DCT225-3220	32-3/4	43	43	43	35	22	50	28	17

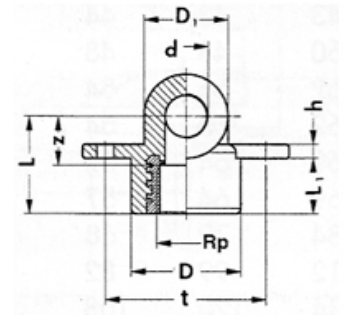
t* = Distance of mounting holes



90° FEMALE ELBOW FOR HOLLOW WALL

CODE	d - Rp	D	D1	z	L1	L1	t*	h
DCT226-2015	20-1/2	35	29	21	35	11	59	5

t* = Distance of mounting holes



EQUAL TEE

CODE	d	D	l	z
D240-0016	16	23	24	11
DCT240-0020	20	29	28	13
DCT240-0025	25	34	32	16
DCT240-0032	32	43	38	20
DCT240-0040	40	52	44	23
DCT240-0050	50	65	52	28
DCT240-0063	63	84	62	34
DCT240-0075	75	100	71	41
DCT240-0090	90	120	83	50
DCT240-0110	110	148	99	62
DCT240-0125	125	165	124	84

