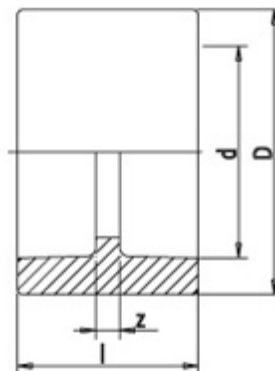


COUPLER

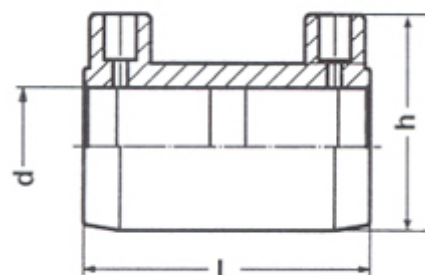
CODE	d	D	l	z
D201-0016	16	23	31	5
DCT201-0020	20	29	34	5
DCT201-0025	25	34	37	5
DCT201-0032	32	43	41	5
DCT201-0040	40	52	46	5
DCT201-0050	50	65	52	5
DCT201-0063	63	84	60	5
DCT201-0075	75	99	65	5
DCT201-0090	90	120	76	10
DCT201-0110	110	148	80	6
DCT201-0125	125	165	90	10



ELECTROFUSION COUPLER

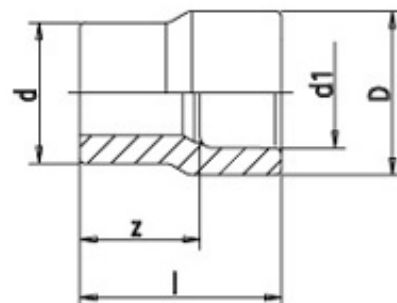
CODE	d	h	L
DCT202-0020	20	52	70
DCT202-0025	25	57	70
DCT202-0032	32	65	70
DCT202-0040	40	75	85
DCT202-0050	50	86	87
DCT202-0063	63	100	97
DCT202-0075	75	114	120
DCT202-0090	90	130	147
DCT202-0110	110	144	157
DCT202-0125	125	167	165

CODE	d	h	L
DCT203-0160	160	205	176
DCT203-0200	200	245	187
DCT203-0250	250	315	243
DCT203-0315	315	375	280
DCT203-0355	355	435	315
DCT203-0400	400	482	355
DCT203-0450	450	534	350
DCT203-0500	500	593	360



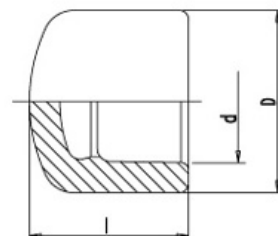
REDUCER

CODE	d	d1	D	l	z
D206-002016	20	16	23	33	20
D206-002516	25	16	23	32	19
DCT206-002520	25	20	29	36	22
DCT206-003220	32	20	29	37	23
DCT206-003225	32	25	34	39	23
DCT206-004020	40	20	34	43	28
DCT206-004025	40	25	34	43	27
DCT206-004032	40	32	43	45	27
DCT206-005020	50	20	43	51	36
DCT206-005025	50	25	43	51	35
DCT206-005032	50	32	43	51	33
DCT206-005040	50	40	52	53	33
DCT206-006320	63	20	34	56	42
DCT206-006325	63	25	34	56	40
DCT206-006332	63	32	43	58	40
DCT206-006340	63	40	52	60	40
DCT206-006350	63	50	65	63	40
DCT206-007550	75	50	65	67	44
DCT206-007563	75	63	80	71	44
DCT206-009050	90	50	65	74	51
DCT206-009063	90	63	80	78	51
DCT206-009075	90	75	99	81	51
DCT206-110063	110	63	85	87	60
DCT206-110075	110	75	100	90	60
DCT206-110090	110	90	110	93	61



END CAP

CODE	d	D	l
D290-0016	16	23	24
DCT290-0020	20	29	25
DCT290-0025	25	34	28
DCT290-0032	32	43	32
DCT290-0040	40	52	36
DCT290-0050	50	65	41
DCT290-0063	63	79	48
DCT290-0075	75	99	54
DCT290-0090	90	120	66
DCT290-0110	110	148	79
DCT290-0125	125	165	87



SPIGOT END CAP

CODE	d	s	L	l
DCT291-0160	160	14.6	140	100
DCT291-0200	200	18.2	190	145
DCT291-0250	250	22.7	218	163
DCT291-0315	315	28.6	250	192
DCT291-0355	355	32.2	275	215
DCT291-0400	400	36.3	283	228
DCT291-0450	450	40.9	306	195
DCT291-0500	500	45.4	335	212

