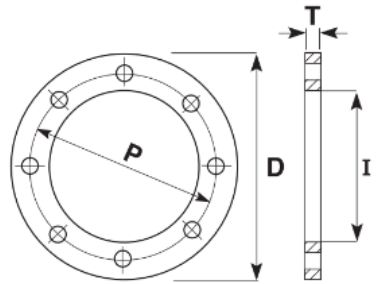


AS 4087 B7 PN16 Galvanised Backing Ring (5441)
 Stainless Backing Ring (5442)
 Nylon Coated Backing Ring (5444)
 For Example: A 110mm Galvanised Backing Ring Would Have The Code 5441.0110B7

SIZE (MM)	NOMINAL FLANGE SIZE	INCH SIZE	P (MM)	I (MM)	D (MM)	T (MM)	BOLT HOLES NO X DIA	BOLT
63	50	2"	114	78	150	11	4X18	M16
75	65	2 1/2"	127	92	165	11	4X18	M16
90	80	3.5"	146	108	185	11	4X18	M16
110	100	4"	178	128	215	13	4X18	M16
125	100	4"	178	135	215	13	4X18	M16
160	150	6"	235	178	280	13	8X18	M16
180	150	6"	235	185	280	13	8X18	M16
200	200	8"	292	235	335	19	8X18	M16
225	200	8"	292	238	335	19	8X18	M16
250	250	10"	356	288	405	19	8X22	M20
280	250	10"	356	300	405	19	8X22	M20
315	300	12"	406	338	455	23	12X22	M20
355	350	14"	470	376	525	30	12X26	M24
n/a	375	15"	495	n/a	550	30	12X26	M24
400	400	16"	521	430	580	30	12X26	M24
450	450	18"	584	470	640	30	12X26	M24
500	500	20"	641	533	705	38	16X26	M24
630	600	24"	756	645	825	48	16X30	M27
710	700	28"	845	740	910	56	20X30	M27
n/a	750	30"	927	n/a	995	56	20X33	M30
800	800	32"	984	843	1060	56	20X36	M33
900	900	36"	1092	947	1175	66	24X36	M33
1000	1000	40"	1175	1050	1255	66	24X36	M33
1200	1200	44"	1410	-	1490	76	32X36	M33

Note: these rings are suited to the Stream PE100 Pressure, Stream HDPE Drainage, Maxair, and Dynatherm PP-RCT ranges.



Comments:

Check that both pipe(s) and fitting to be joined are compatible, only compatible materials should be joined together. Check the PN and SDR rating marked on fitting and compare with that of the pipe. If in doubt, seek advice from the manufacturer. Correct installation procedures should be followed.

The designs, materials and specifications shown are subject to change without notice. This is due to the continuous development of our product range

Contact our technical team for further information.