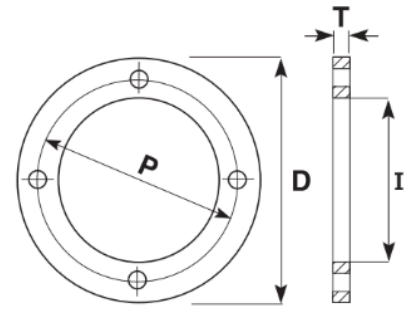




BS EN 1092 PN16 PP Black Coated Steel Backing Ring (5415)
For Example: A 110mm Galvanised Backing Ring Would Have A Code 5415.0110

| SIZE (MM) | NOMINAL FLANGE SIZE | INCH SIZE | P (MM) | I (MM) | D (MM) | T (MM) | BOLT HOLES NO X DIA | BOLT |
|-----------|---------------------|-----------|--------|--------|--------|--------|---------------------|------|
| 20 | 15 | 1/2" | 65 | 32 | 95 | 14 | 4x14 | M12 |
| 25 | 20 | 3/4" | 75 | 37 | 105 | 14 | 4x14 | M12 |
| 32 | 25 | 1" | 85 | 44 | 115 | 14 | 4x14 | M12 |
| 40 | 32 | 1 1/4" | 100 | 52 | 140 | 16 | 4x18 | M16 |
| 50 | 40 | 1 1/2" | 110 | 62 | 150 | 18 | 4x18 | M16 |
| 63 | 50 | 2" | 125 | 74 | 165 | 18 | 4x18 | M16 |
| 75 | 65 | 2 1/2" | 145 | 87 | 185 | 18 | 4x18 | M16 |
| 90 | 80 | 3" | 160 | 103 | 200 | 18 | 8x18 | M16 |
| 110 | 100 | 4" | 180 | 125 | 220 | 18 | 8x18 | M16 |
| 125 | 100 | 4" | 180 | 140 | 220 | 18 | 8x18 | M16 |
| 125 | 125 | 5" | 210 | 140 | 250 | 22 | 8x18 | M16 |
| 140 | 125 | 5" | 210 | 158 | 250 | 22 | 8x18 | M16 |
| 160 | 150 | 6" | 240 | 175 | 285 | 22 | 8x22 | M20 |
| 180 | 150 | 6" | 240 | 185 | 285 | 22 | 8x22 | M20 |
| 200 | 200 | 8" | 295 | 230 | 340 | 22 | 12x22 | M20 |
| 225 | 200 | 8" | 295 | 240 | 340 | 22 | 12x22 | M20 |
| 250 | 250 | 10" | 355 | 290 | 405 | 22 | 12x26 | M24 |
| 280 | 250 | 10" | 355 | 300 | 405 | 22 | 12x26 | M24 |
| 315 | 300 | 12" | 410 | 345 | 460 | 22 | 12x26 | M24 |
| 355 | 350 | 14" | 470 | 373 | 520 | 26 | 16x26 | M24 |
| 400 | 400 | 16" | 525 | 425 | 580 | 30 | 16x30 | M27 |
| 450 | 450 | 18" | 585 | 480 | 640 | 40 | 20x30 | M27 |
| 500 | 500 | 20" | 650 | 533 | 715 | 44 | 20x33 | M30 |
| 630 | 600 | 24" | 770 | 660 | 840 | 54 | 20x36 | M33 |



Note: these rings are suited to the Stream PE100 Pressure, Stream HDPE, Maxair, and Dynatherm ranges.

Comments:

Check that both pipe(s) and fitting to be joined are compatible, only compatible materials should be joined together. Check the PN and SDR rating marked on fitting and compare with that of the pipe. If in doubt, seek advice from the manufacturer. Correct installation procedures should be followed.

The designs, materials and specifications shown are subject to change without notice. This is due to the continuous development of our product range

Contact our technical team for further information.

Wellington
17 Raiha Street, Porirua

Auckland
3/68 McLaughlins Road, Wiri

P 0800 473 100
E sales@upg.net.nz
W upg.nz