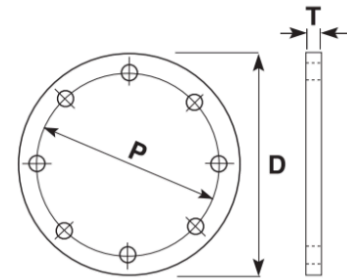


Blind Flange

SIZE (MM)	NOMINAL FLANGE SIZE	INCH SIZE	TABLE D GALVANISED (5471)	TABLE D STAINLESS (5472)	TABLE E GALVANISED (5481)	TABLE E STAINLESS (5482)	ANSI 150 GALVANISED (5491)	ANSI 150 STAINLESS (5492)
20	15	1/2"	5471-0020	5472-0020	5481-0020	5482-0020	5491-0020	5492-0020
25	20	3/4"	5471-0025	5472-0025	5481-0025	5482-0025	5491-0025	5492-0025
32	25	1"	5471-0032	5472-0032	5481-0032	5482-0032	5491-0032	5492-0032
40	32	1 1/4"	5471-0040	5472-0040	5481-0040	5482-0040	5491-0040	5492-0040
50	40	1 1/2"	5471-0050	5472-0050	5481-0050	5482-0050	5491-0050	5492-0050
63	50	2"	5471-0063	5472-0063	5481-0063	5482-0063	5491-0063	5492-0063
75	65	2 1/2"	5471-0075	5472-0075	5481-0075	5482-0075	5491-0075	5492-0075
90	80	3"	5471-0090	5472-0090	5481-0090	5482-0090	5491-0090	5492-0090
110	100	4"	5471-0110	5472-0110	5481-0110	5482-0110	5491-0110	5492-0110
125	100	4"	5471-4125	5472-4125	5481-4125	5482-4125	5491-4125	5492-4125
125	125	5"	5471-5125	5472-5125	5481-5125	5482-5125	5491-5125	5492-5125
160	150	6"	5471-0160	5472-0160	5481-0160	5482-0160	5491-0160	5492-0160
180	150	6"	5471-0180	5472-0180	5481-0180	5482-0180	5491-0180	5492-0180
200	200	8"	5471-0200	5472-0200	5481-0200	5482-0200	5491-0200	5492-0200
225	200	8"	5471-0225	5472-0225	5481-0225	5482-0225	5491-0225	5492-0225
250	250	10"	5471-0250	5472-0250	5481-0250	5482-0250	5491-0250	5492-0250
280	250	10"	5471-0280	5472-0280	5481-0280	5482-0280	5491-0280	5492-0280
315	300	12"	5471-0315	5472-0315	5481-0315	5482-0315	5491-0315	5492-0315
355	350	14"	5471-0355	5472-0355	5481-0355	5482-0355	5491-0355	5492-0355
400	400	16"	5471-0400	5472-0400	5481-0400	5482-0400	5491-0400	5492-0400
450	450	18"	5471-0450	5472-0450	5481-0450	5482-0450	5491-0450	5492-0450
500	500	20"	5471-0500	5472-0500	5481-0500	5482-0500	5491-0500	5492-0500
560	550	22"	5471-0560	5472-0560	5481-0560	5482-0560	5491-0560	5492-0560
630	600	24"	5471-0630	5472-0630	5481-0630	5482-0630	5491-0630	5492-0630
710	650	26"	5471-0710	5472-0710	5481-0710	5482-0710	5491-0710	5492-0710
800	700	28"	5471-0800	5472-0800	5481-0800	5482-0800	5491-0800	5492-0800

Note: these rings are suited to the Stream PE100 Pressure, Stream HDPE, Maxair, and Dynatherm ranges.



Comments:

Check that both pipe(s) and fitting to be joined are compatible, only compatible materials should be joined together. Check the PN and SDR rating marked on fitting and compare with that of the pipe. If in doubt, seek advice from the manufacturer. Correct installation procedures should be followed.

The designs, materials and specifications shown are subject to change without notice. This is due to the continuous development of our product range

Contact our technical team for further information.

Wellington
17 Raiha Street, Porirua

Auckland
3/68 McLaughlins Road, Wiri

P 0800 473 100
E sales@upg.net.nz
W upg.nz