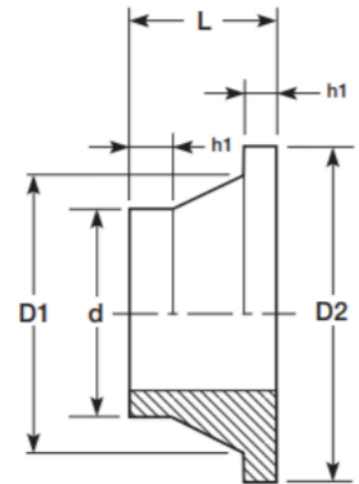


## Butt Weld Stub Flange SDR17

PE100 • SDR17

SIZE (MM)	CODE SDR17	D1 (MM)	D2 (MM)	L (MM)	H1 (MM)
180	4416-0180	190	212	80	30
200	4416-0200	225	268	95	30
225	4416-0225	230	268	95	30
250	4416-0250	284	320	100	35
280	4416-0280	294	320	100	35
315	4416-0315	335	370	105	40
355	4416-0355	366	430	110	40
400	4416-0400	420	480	110	40
450	4416-0450	470	545	110	60
500	4416-0500	520	585	125	60
560	4416-0560	580	685	125	60
630	4416-0630	650	685	130	60
710	4416-0710	735	800	130	60
800	4416-0800	825	904	130	92
900	4416-0900	940	1000	130	93
1000	4416-1000	1025	1113	130	113
1200	4416-1200	1230	1330	170	113



- Other SDR ratings available or can be fabricated

**Comments:**

Check that both pipe(s) and fitting to be joined are compatible, only compatible materials should be joined together. Check the PN and SDR rating marked on fitting and compare with that of the pipe. If in doubt, seek advice from the manufacturer. Correct installation procedures should be followed.

The designs, materials and specifications shown are subject to change without notice. This is due to the continuous development of our product range

Contact our technical team for further information.

**Wellington**  
17 Raiha Street, Porirua

**Auckland**  
3/68 McLaughlins Road, Wiri

**P** 0800 473 100  
**E** sales@upg.net.nz  
**W** upg.nz