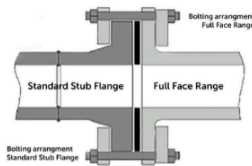
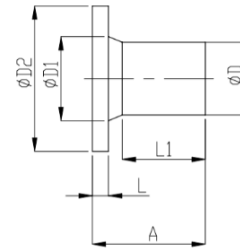


Maxi Stub Flanges - Full Face PN16 RATED

NYLON COATED (FBE)
SDR11 (PN16) WITH AS4087 B7 TABLE D BACKING RING

CODE (NYLON FLANGE)	PE END SIZE	FLANGE SIZE	L MM	A MM	FLANGE PCD	BOLT HOLES NO. X DIA	FLANGE COMBINED THICKNESS (C)	PIPE END SDR
3593-9080	90mm	3" DN80	20	140	146mm	4 x Ø18	31	SDR11
3593-1110	110mm	4" DN100	20	155	178mm	4 x Ø18	33	SDR11
3593-1210	125mm	4" DN100	20	165	178mm	4 x Ø18	33	SDR11
3593-1815	180mm	6" DN150	25	190	235mm	8 x Ø22	38	SDR11
3593-2015	200mm	6" DN150	30	190	235mm	8 x Ø22	49	SDR11
3593-2520	250mm	8" DN200	35	197	292mm	8 x Ø22	54	SDR11
3593-3125	315mm	10" DN250	40	230	356mm	8 x Ø22	59	SDR11
3593-3530	355mm	12" DN300	45	241	406mm	12 x Ø26	68	SDR11
3593-4537	450mm	15" DN375	55	285	495mm	12 x Ø26	85	SDR11
3593-4540	450mm	16" DN400	55	285	521mm	12 x Ø26	85	SDR11



- Long spigot for electrofusion or butt welding
- Ends to SDR11 as standard. We can offer to SDR13.6 if required.
- PN16 rated
- Injection moulded spigot conforms to AS/NZS 4129
- AS4087 Stainless Steel or Nylon Coated as standard - other flange patterns available

Comments:

Check that both pipe(s) and fitting to be joined are compatible, only compatible materials should be joined together. Check the PN and SDR rating marked on fitting and compare with that of the pipe. If in doubt, seek advice from the manufacturer. Correct installation procedures should be followed.

The designs, materials and specifications shown are subject to change without notice. This is due to the continuous development of our product range

Contact our technical team for further information.