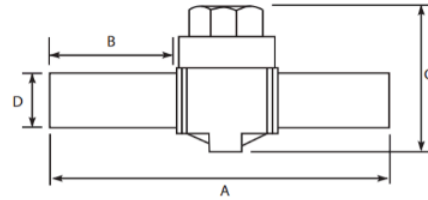


PE Ball Valve - Full Port

PE100 • 16 BAR WATER • PN10 GAS

SIZE (MM)	CODE	A (MM)	B (MM)	C (MM)
20	2962-0020	310	107	136
25	2962-0025	310	107	136
32	2962-0032	324	109	153
40	2962-0040	324	109	153
50	2962-0050	410	125	195
63	2962-0063	420	125	201
90	2962-0090	575	188	289
110	2962-0110	575	188	289
125	2962-0125	575	188	289
160	2962-0160	625	154	490
180	2962-0180	625	154	490
200	2962-0200	625	154	490
225	2962-0225	625	154	490



Notes:

- Valve keys for opening are available separately
- Other sizes available
- Full port opening

Comments:

Check that both pipe(s) and fitting to be joined are compatible, only compatible materials should be joined together. Check the PN and SDR rating marked on fitting and compare with that of the pipe. If in doubt, seek advice from the manufacturer. Correct installation procedures should be followed.

The designs, materials and specifications shown are subject to change without notice. This is due to the continuous development of our product range

Contact our technical team for further information.