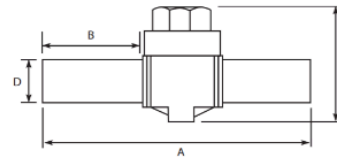


PE Ball Valve - Full Port

PE100 • 16 BAR WATER • PN10 GAS

SIZE	CODE	A	B	C
25	2942-0025	310	84	205
32	2942-0032	320	90	205
40	2942-0040	340	98	220
50	2942-0050	365	111	235
63	2942-0063	440	130	270
90	2942-0090	454	158	320
110	2942-0110	585	165	335
125	2942-0125	595	176	335
160	2942-0160	710	196	405
180	2942-0180	725	210	405



Notes:

- Full port opening
- Comes with lever handle
- Full PE100-RC body and spigot

Comments:

Check that both pipe(s) and fitting to be joined are compatible, only compatible materials should be joined together. Check the PN and SDR rating marked on fitting and compare with that of the pipe. If in doubt, seek advice from the manufacturer. Correct installation procedures should be followed.

The designs, materials and specifications shown are subject to change without notice. This is due to the continuous development of our product range

Contact our technical team for further information.