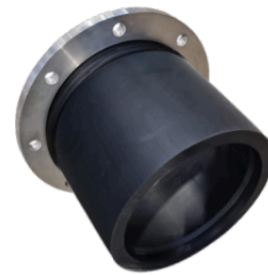
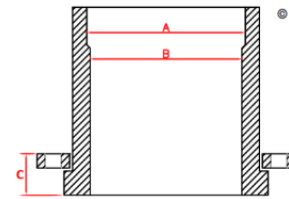


Slim Flange - AS4087 Flange

PN10 RATED

STAINLESS STEEL  
SDR17 (PN10) WITH AS4087 B7 TABLE D BACKING RING

CODE (NYLON FLANGE)	PE END SIZE	FLANGE SIZE	PRESSURE RATING	PIPE END SDR	PIPE ID FLANGE END (B)	FLANGE PCD	BOLT HOLES NO. X DIA	FLANGE COMBINED THICKNESS (C)
3466-2521	250mm	200mm (8")	PN10	SDR17	198mm	292mm	8×18	44
3466-3125	315mm	250mm (10")	PN10	SDR17	246mm	356mm	8×22	44
3466-3530	355mm	300mm (12")	PN10	SDR17	312mm	406mm	12×22	53
3466-4030	400mm	300mm (12")	PN10	SDR17	312mm	406mm	12×22	53
3466-4035	400mm	350mm (14")	PN10	SDR17	352mm	470mm	12×26	63
3466-4037	400mm	375mm (15")	PN10	SDR17	352mm	495mm	12×26	63
3466-4537	450mm	375mm (15")	PN10	SDR17	396mm	495mm	12×26	75
3466-4540	450mm	400mm (16")	PN10	SDR17	396mm	521mm	12×26	75
3466-5045	500mm	450mm (18")	PN10	SDR17	440mm	584mm	12×26	90
3466-5650	560mm	500mm (20")	PN10	SDR17	492mm	641mm	16×26	98



Comments:

Check that both pipe(s) and fitting to be joined are compatible, only compatible materials should be joined together. Check the PN and SDR rating marked on fitting and compare with that of the pipe. If in doubt, seek advice from the manufacturer. Correct installation procedures should be followed.

The designs, materials and specifications shown are subject to change without notice. This is due to the continuous development of our product range

Contact our technical team for further information.