

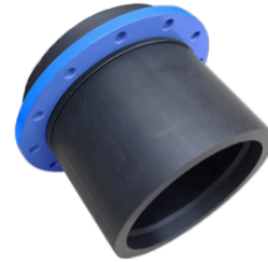
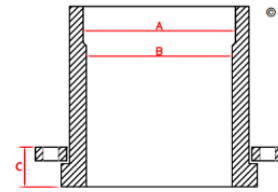
Slim Flange - Table E Flange

PN10 RATED

NYLON COATED (FBE)
SDR17 (PN10) WITH AS2129 TABLE E BACKING RING

CODE (NYLON FLANGE)	PE END SIZE	FLANGE SIZE	PRESSURE RATING	PIPE END SDR	PIPE ID FLANGE END (B)	FLANGE PCD	BOLT HOLES NO. X DIA	FLANGE COMBINED THICKNESS (C)
3456-9075	90mm	75mm (2 1/2")	PN10	SDR17	79mm	127mm	4×18	28
3456-1190	110mm	90mm (3")	PN10	SDR17	96mm	146mm	4×18	30
3456-1612	160mm	125mm (5")	PN10	SDR17	141mm	210mm	8×18	32
3456-2015	200mm	150mm (6")	PN10	SDR17	158mm	235mm	8×22	41
3456-2521	250mm	200mm (8")	PN10	SDR17	198mm	292mm	8×22	44
3456-3125	315mm	250mm (10")	PN10	SDR17	246mm	356mm	12×22	47
3456-3530	355mm	300mm (12")	PN10	SDR17	312mm	406mm	12×26	55
3456-4030	400mm	300mm (12")	PN10	SDR17	312mm	406mm	12×26	55
3456-4035	400mm	350mm (14")	PN10	SDR17	352mm	470mm	12×26	63
3456-4540	450mm	400mm (16")	PN10	SDR17	396mm	521mm	12×26	77
3456-5045	500mm	450mm (18")	PN10	SDR17	440mm	584mm	16×26	95
3456-5650	560mm	500mm (20")	PN10	SDR17	492mm	641mm	16×26	98
3456-6356	630mm	560mm (22")	PN10	SDR17	554mm	699mm	16×30	104

Note: All options are available with galvanised backing ring option. PN16, ANSI and other flange patterns are available on request.



Comments:

Check that both pipe(s) and fitting to be joined are compatible, only compatible materials should be joined together. Check the PN and SDR rating marked on fitting and compare with that of the pipe. If in doubt, seek advice from the manufacturer. Correct installation procedures should be followed.

The designs, materials and specifications shown are subject to change without notice. This is due to the continuous development of our product range

Contact our technical team for further information.