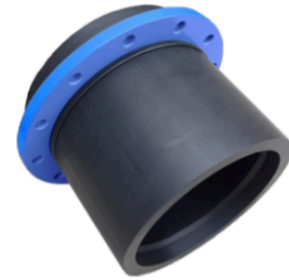
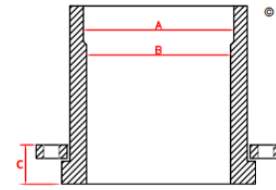


Slim Flange - Table E Flange PN12.5 RATED

NYLON COATED (FBE)
SDR11 (PN12.5) WITH AS2129 TABLE E BACKING RING

CODE (NYLON FLANGE)	PE END SIZE	FLANGE SIZE	PRESSURE RATING	PIPE END SDR	PIPE ID FLANGE END (B)	FLANGE PCD	BOLT HOLES NO. X DIA	FLANGE COMBINED THICKNESS (C)
3454-9075	90mm	75mm (2 1/2")	PN16	SDR11	73mm	127mm	4x18	28
3454-1190	110mm	90mm (3")	PN16	SDR11	89mm	146mm	4x18	31
3454-1612	160mm	125mm (5")	PN16	SDR11	130mm	210mm	8x18	39
3454-2015	200mm	150mm (6")	PN16	SDR11	146mm	235mm	8x22	49
3454-2521	250mm	200mm (8")	PN12.5	SDR11/13.6	203mm	292mm	8x22	54
3454-3125	315mm	250mm (10")	PN12.5	SDR11/13.6	256mm	356mm	12x22	62
3454-3530	355mm	300mm (12")	PN12.5	SDR11/13.6	289mm	406mm	12x26	65
3454-4030	400mm	300mm (12")	PN12.5	SDR11/13.6	289mm	406mm	12x26	65
3454-4035	400mm	350mm (14")	PN12.5	SDR11/13.6	325mm	470mm	12x26	75
3454-4540	450mm	400mm (16")	PN12.5	SDR11/13.6	366mm	521mm	12x26	92
3454-5045	500mm	450mm (18")	PN12.5	SDR11/13.6	406mm	584mm	16x26	95
3454-5650	560mm	500mm (20")	PN12.5	SDR11/13.6	455mm	641mm	16x26	98
3454-6356	630mm	560mm (22")	PN12.5	SDR11/13.6	512mm	699mm	16x30	109
3454-6356	630mm	560mm (22")	PN16	SDR11	456mm	699mm	16x30	104



Comments:

Check that both pipe(s) and fitting to be joined are compatible, only compatible materials should be joined together. Check the PN and SDR rating marked on fitting and compare with that of the pipe. If in doubt, seek advice from the manufacturer. Correct installation procedures should be followed.

The designs, materials and specifications shown are subject to change without notice. This is due to the continuous development of our product range

Contact our technical team for further information.