

Spigot Stub Flange SDR11

PE100 • SDR11 • SUITABLE FOR ELECTROFUSION

SIZE (MM)	CODE SDR11	A (MM)	B (MM)	L (MM)	T (MM)
20	3414-0020	45	76	41	7
25	3414-0025	58	81	41	9
32	3414-0032	68	85	44	10
40	3414-0040	73	88	49	11
50	3414-0050	84	92	55	12
63	3414-0063	95	100	63	14
75	3414-0075	109	120	70	16
90	3414-0090	128	132	79	17
110	3414-0110	158	157	82	18
110	3414-0110V	158	157	82	18
125	3414-0125	158	170	87	25
125	3414-0125V	158	170	87	25
140	3414-0140	188	175	92	25
140	3414-0140V	188	175	92	25
160	3414-0160	212	180	98	25
160	3414-0160V	212	180	98	25
180	3414-0180	212	190	105	31
200	3414-0200	268	200	112	32
200	3414-0200V	268	200	112	32
225	3414-0225	268	200	120	32
225	3414-0225V	268	200	120	32
250	3414-0250	320	205	129	35
250	3414-0250V	320	205	129	35
280	3414-0280	320	215	139	35
280	3414-0280V	320	215	139	35
315	3414-0315	370	220	150	35
315	3414-0315V	370	220	150	35
355	3414-0355	430	410	300	40
355	3414-0355V	430	410	300	40
400	3414-0400	480	410	300	45
450	3414-0450	545	410	300	45
500	3414-0500	585	475	350	60
560	3414-0560	685	475	350	60
630	3414-0630	685	480	350	60

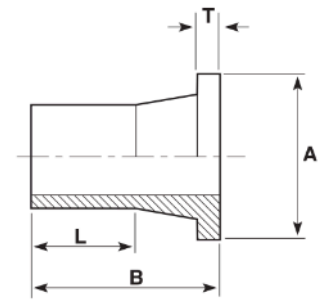
• Please specify if stub is to suit butterfly valves (add "V" to code).

Spigot Stub Flange SDR17

PE100 • SDR17 • SUITABLE FOR ELECTROFUSION

SIZE (MM)	CODE SDR17	A (MM)	B (MM)	L (MM)	T (MM)
90	3416-0090	128	132	79	17
110	3416-0110	158	157	82	18
125	3416-0125	158	170	87	18
140	3416-0140	188	175	92	18
160	3416-0160	212	180	98	18
160	3416-0160V	212	180	98	18
180	3416-0180	212	190	105	20
200	3416-0200	268	200	112	24
200	3416-0200V	268	200	112	24
225	3416-0225	268	200	120	24
250	3416-0250	320	205	129	25
250	3416-0250V	320	205	129	25
280	3416-0280	320	215	139	25
315	3416-0315	370	220	150	25
315	3416-0315V	370	220	150	35
355	3416-0355	430	410	300	40
355	3416-0355V	430	410	300	40
400	3416-0400	480	410	300	45
450	3416-0450	545	410	300	45
500	3416-0500	585	475	350	60
560	3416-0560	685	475	350	60
630	3416-0630	685	480	350	60

• Please specify if stub is to suit butterfly valves (add "V" to code).



Comments:

Check that both pipe(s) and fitting to be joined are compatible, only compatible materials should be joined together. Check the PN and SDR rating marked on fitting and compare with that of the pipe. If in doubt, seek advice from the manufacturer. Correct installation procedures should be followed.

The designs, materials and specifications shown are subject to change without notice. This is due to the continuous development of our product range

Contact our technical team for further information.

Wellington
17 Raiha Street, Porirua

Auckland
3/68 McLaughlins Road, Wiri

P 0800 473 100

E sales@upg.net.nz

W upg.nz