



# SQUEEZE OFF TOOLS

SIZE RANGE: 16 - 200 MM



Ultimate Solutions.  
Intelligent Delivery.

# Mini Squeeze-off Tool (16-40mm)

COMMENTS

The mini squeeze-off is a very compact tool made from aluminium and steel components. Featuring a durable steel thread and bars to ensure the pipeline is shut off.

- Working Range: 16-40mmOD
- All SDR's from SDR7.4-SDR17
- Zinc-plated durable finish



## TECHNICAL FEATURES

40MM SQUEEZE OFF TOOL      CODE: 9974-1642	
Working range	16mm - 40mm
Operation	Manual
Dimensions	110 x 25 x 70mm
Weight	1.2 Kg

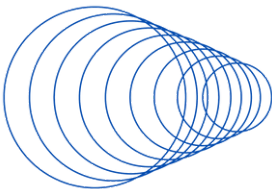
**WELLINGTON**  
17 Raiha Street, Porirua

**AUCKLAND**  
3/68 McLaughlins Road, Wiri

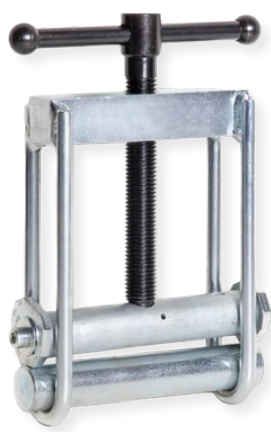
**P** 0800 473 100

**E** sales@upg.net.nz

**W** upg.nz



# Manual Pipe Squeeze-off tool (20-63mm)



## COMMENTS

The 63mm squeeze off tool can be used to 'squeeze off' SDR11 PE pipe in sizes from 20-63mm and 63mm SDR17 PE pipe only.

Once the pipe is inserted, the bottom bar is fixed in position by a shackle and the squeezing depth is set on the top bar to ensure pipe is not 'oversqueezed'. The handle is rotated until the bar contacts the stops and the liquid/gas flow is stopped.

This unit is constructed from durable components with a large 'T' handle and thread requiring minimal force to compress the pipeline.

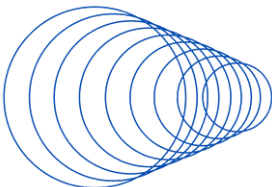
## TECHNICAL FEATURES

63MM SQUEEZE OFF TOOL      CODE: 9974-1663	
Working range	20mm - 63mm
Operation	Manual
Dimensions	325 x 70 x 330mm
Weight	5.3 Kg

**WELLINGTON**  
17 Raiha Street, Porirua

**AUCKLAND**  
3/68 McLaughlins Road, Wiri

**P** 0800 473 100  
**E** sales@upg.net.nz  
**W** upg.nz



## Manual Pipe Squeeze-off tool (63-125mm)



### COMMENTS

The 63-125mm squeeze off tool is used to stop the flow of gas or water through PE pipelines for sizes 63, 75, 90mm in SDR11 and 90, 110, 125mm in SDR17.

Mechanical operation with a large steel T bar lever, these tools are robust and lightweight for use on all sites. Comes with zinc plated durable finish.

Includes stoppers for SDR11 and SDR17 to set according to the pipes diameter to prevent over-squeezing.

### TECHNICAL FEATURES

125MM SQUEEZE OFF TOOL      CODE: 9974-6312	
Working range	63, 75, 90mm in SDR11 and 90, 110, 125mm in SDR17
Approx Dimensions	340 x 115 x 520 mm
Weight	18 Kg

#### WELLINGTON

17 Raiha Street, Porirua

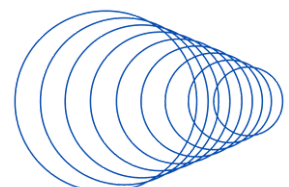
#### AUCKLAND

3/68 McLaughlins Road, Wiri

**P** 0800 473 100

**E** sales@upg.net.nz

**W** upg.nz



# Hydraulic Pipe Squeeze-off tool (63-200mm)



## COMMENTS

The 63-200mm squeeze off tool is used to stop the flow of gas or water through PE pipelines for sizes 63-200mm in SDR11 and SDR17 Wall thicknesses as per below table.

Operated via a hydraulic pump and lever, this hydraulic pipe squeeze-off tool can only be operated in it's upright position due to the hydraulic pump action.

Easy to move/transport with two handles and includes a sturdy steel frame.

Includes stoppers for SDR11 and SDR17 to set according to the pipes diameter to prevent over-squeezing.

## TECHNICAL FEATURES

200MM SQUEEZE OFF TOOL      CODE: 9974-6320	
Working range	63 - 200 mm / SDR11-17 Seperate stops are supplied to suit SDR11 or SDR17 pipe
Dimensions	476 x 90 x 722 mm
Weight	37 Kg

### WELLINGTON

17 Raiha Street, Porirua

### AUCKLAND

3/68 McLaughlins Road, Wiri

**P** 0800 473 100

**E** sales@upg.net.nz

**W** upg.nz

