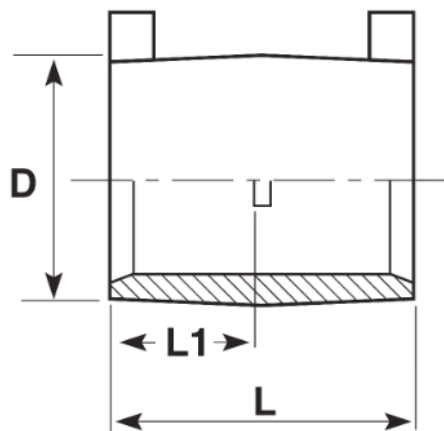


Electrofusion Coupler PN16 Pressure

PE100 · PN16 WATER · 1000KPA GAS

SIZE	CODE	L	L1	D	SDR RANGE
20	2014-0020	77	37.5	29	11
25	2014-0025	77	37.5	33.5	11
32	2014-0032	77	37.5	43	11
40	2014-0040	91	44	51.5	11
50	2014-0050	91	44	61.5	11
63	2014-0063	102	50	78	11
75	2014-0075	122	59.5	92.5	11-17.6
90	2014-0090	122	60	109.5	11-17.6
110	2014-0110	144	70	133	11-17.6
125	2014-0125	154	75	151	11-17.6
140	2014-0140	165	81	173	11-17.6
160	2014-0160	175	86	195	11-17.6
180	2014-0180	187	92	219	11-17.6
200	2014-0200	187	92	242	11-17.6
225	2014-0225	222	111	270	11-17.6
250	2014-0250	222	111	303	11-21
280	2014-0280	260	130	345	11-21
315	2014-0315	261	128	386	11-21
355	2014-0355	260	126	437	11-21
400	2014-0400	295	147	499	11-21
450	2014-0450	320	160	522	11-26
500	2014-0500	360	180	621	11-26
560	2014-0560	390	195	694	11-26
630	2014-0630	430	215	780	11-26
710	2014-0710	500	245	812	11-13.6
800	2014-0800	500	245	915	11-13.6
900	2014-0900	550	270	1110	11-13.6
1000	2014-1000	600	395	1238	11-13.6



Comments:

Check that both pipe(s) and fitting to be joined are compatible, only compatible materials should be joined together. Check the PN and SDR rating marked on fitting and compare with that of the pipe. If in doubt, seek advice from the manufacturer. Correct installation procedures should be followed.

The designs, materials and specifications shown are subject to change without notice. This is due to the continuous development of our product range

Contact our technical team for further information.